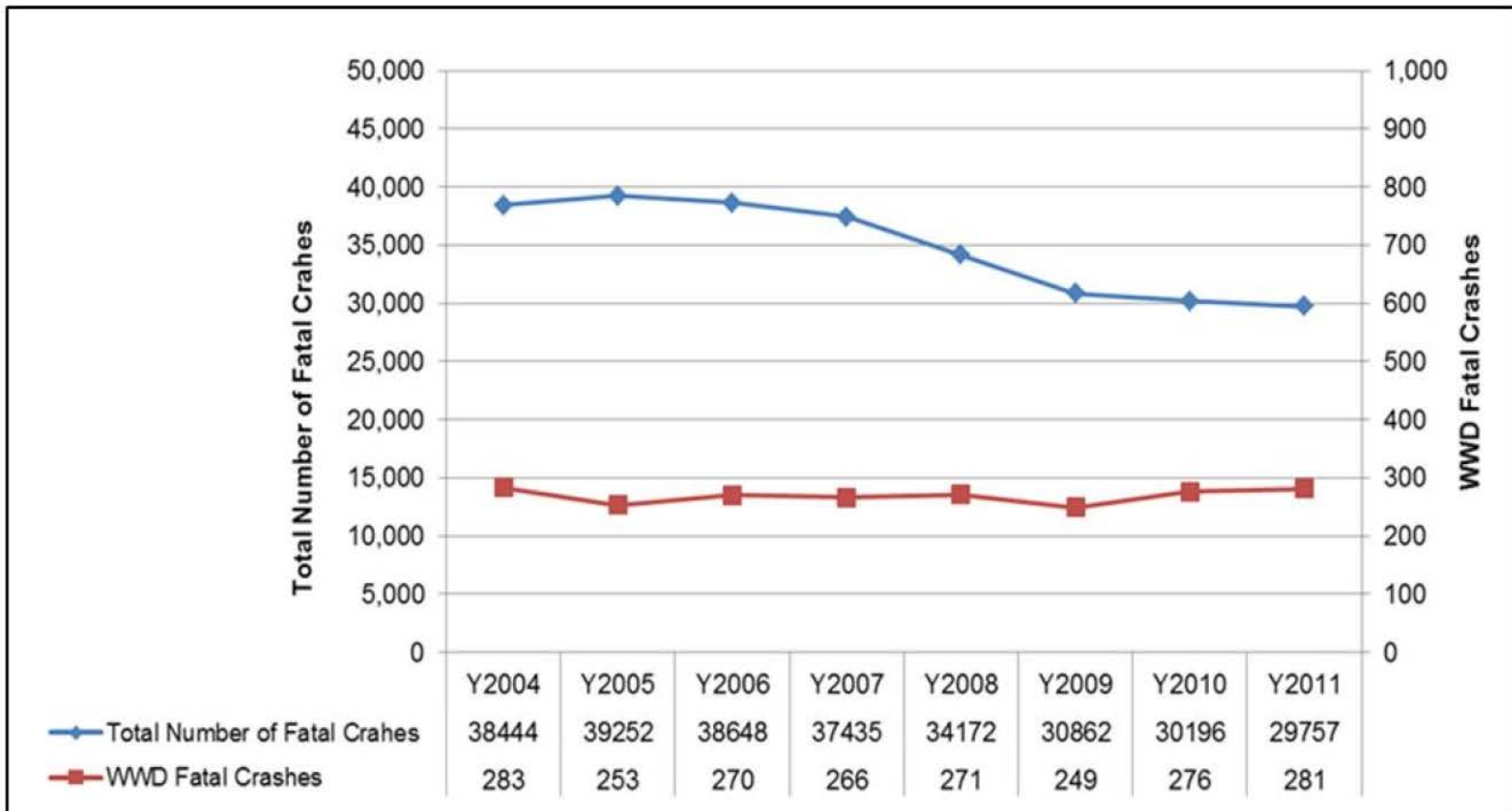
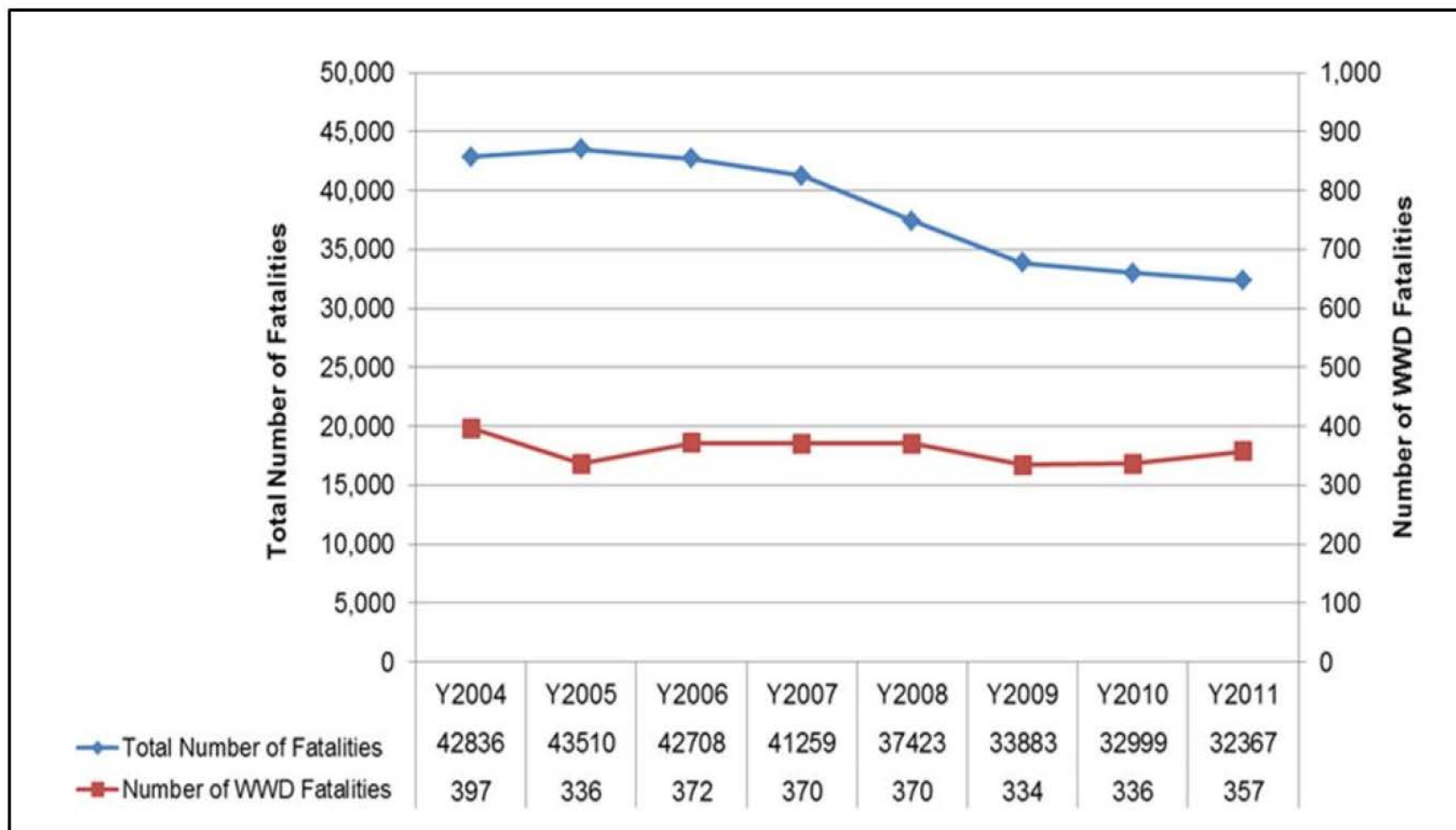


National Trend of WWD Fatal Crashes



National Trend of WWD Fatalities

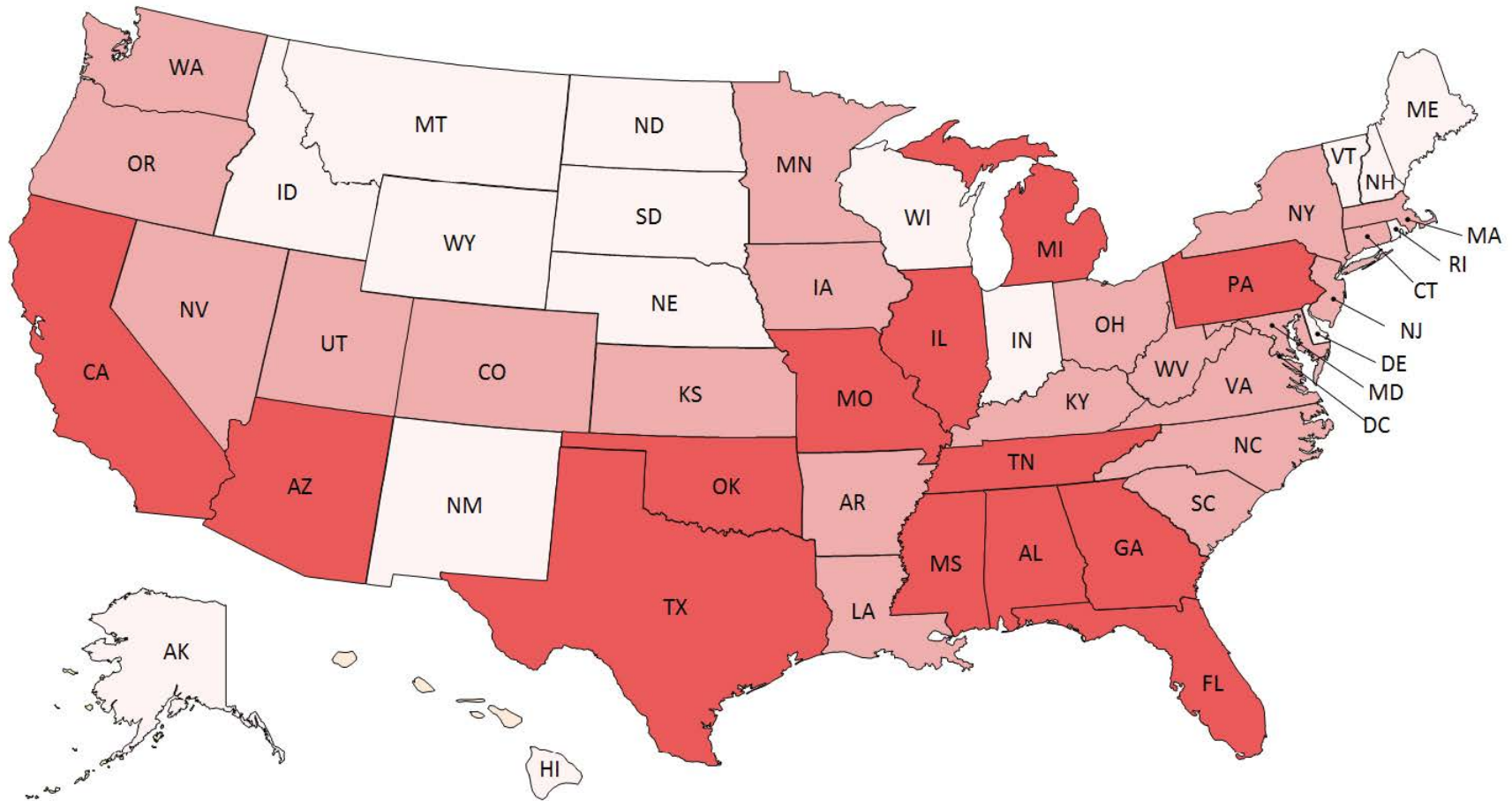


About **One Percent** of Traffic Fatalities Caused by WWD

Distribution of WWD Fatalities Among States

Group 1 (2% and Higher)			Group 2 (Between 1-2%)			Group 3 (Below 1%)		
State	Frequency	% U.S. Total	State	Frequency	% U.S. Total	State	Frequency	% U.S. Total
Texas	51	14.2%	Louisiana	7	1.9%	Idaho	3	0.8%
California	35	9.7%	New Jersey	7	1.9%	Indiana	3	0.8%
Florida	28	7.8%	New York	7	1.9%	New Mexico	3	0.8%
Pennsylvania	14	3.9%	North Carolina	7	1.9%	Wisconsin	3	0.8%
Missouri	13	3.6%	Virginia	7	1.9%	Delaware	2	0.6%
Illinois	12	3.3%	Washington	7	1.9%	Montana	2	0.6%
Georgia	11	3.1%	Colorado	6	1.7%	Hawaii	1	0.3%
Mississippi	11	3.1%	Kansas	6	1.7%	Maine	1	0.3%
Tennessee	11	3.1%	Ohio	6	1.7%	New Hampshire	1	0.3%
Arizona	10	2.8%	Arkansas	5	1.4%	Rhode Island	1	0.3%
Alabama	9	2.5%	Maryland	5	1.4%	South Dakota	1	0.3%
Michigan	8	2.2%	Minnesota	5	1.4%	Vermont	1	0.3%
Oklahoma	8	2.2%	Nevada	5	1.4%	Wyoming	1	0.3%
			South Carolina	5	1.4%	Alaska	0	0.0%
			Utah	5	1.4%	District of Columbia	0	0.0%
			West Virginia	5	1.4%	Nebraska	0	0.0%
			Connecticut	4	1.1%	North Dakota	0	0.0%
			Iowa	4	1.1%			
			Kentucky	4	1.1%			
			Massachusetts	4	1.1%			
			Oregon	4	1.1%			

Distribution of WWD Fatalities Among States



2% or higher

1% - 2%

Below 1%