

Presence Detector

PD300/PD310



PRESENCE DETECTOR FOR FLASHING SIGNS

TrafficCalm® uses Houston Radar, a leading manufacturer, Presence Detector as an efficient solution for enhancing Flashing Sign Systems. By integrating this advanced detector, the LED flashers on signs become “vehicle activated.” The benefits include reduced power consumption and greater impact, as the flashers activate precisely when a vehicle approaches the sign. Gone are the unnecessary nighttime flashes when no cars are passing.

The present detector works great at conflict intersections where sideroad traffic needs to come to a stop for a short or long duration of time.

FEATURES

Highly Accurate Radar

FMCW (Frequency-Modulated Continuous-Wave Radar) Provides excellent Accuracy for distance and Velocity. Measuring the range and velocity ensures positive readings for accurate outputs.

Ruggedized Electronics

All Electronics are environmentally sealed. The entire pole with sign, controller, solar panels, batteries, and Presence Detector are built to be weatherproof and withstand the harshest of environments

Ease of Installation

The ease of installation allows for quick setup on any existing sign post.

Made in the USA

Houston Radar Present Detector Radars are manufactured in the USA in an ISO 9001-2001 certified facility, meeting and exceeding industry and state testing requirements. The sensors are Build America/Buy America Act Compliant.

TRAFFICALM.COM



SPECIFICATIONS

■ Detection

Range: 120 ft (37 m)

Frequency-Modulated Continuous-Wave Radar

Beam Angle: 38°x45°

FCC (TIAPD300) & CE Mark

Pickup Distance: 120 feet in highway mode 80 feet in intersection mode

■ Compatibility

Integrates with all TrafficAlm® Controllers and Collaborators

■ Environmental

Weatherproof Enclosure

Potted electronics (hermetically sealed)

-40° F to + 185° F operating range (-40° C to +85° C)

DETAILS

■ Physical Description

Size: 1.9" w x 2.1" h x 0.9" d (4.5 cm x 4.8 cm x 2.4 cm)

Weight: 0.1 lbs (0.05 kg)

Mounting: Universal bracket accommodates most industry-standard round or square posts of suitable load rating

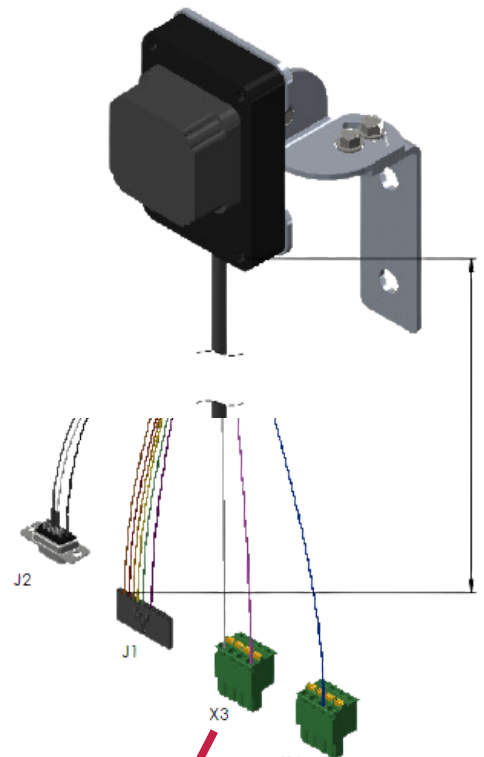
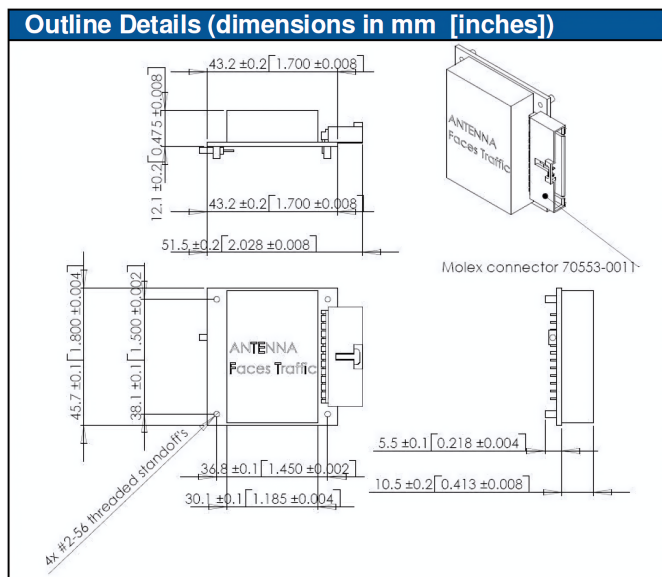
10ft (3 m) single cable extension to reach Controller or Collaborator

Occupied Band: 24.020 GHz to 24.230 GHz

■ Warranty and Service

5-year limited warranty

Unlimited tech support from US based factory technicians



CON X3 (4 PIN PHX RADAR)	CON X4 (4 PIN PHX IN 1)	WIRE COLOR	SIGNAL NAME	DIRECTION (WRT RADAR)	DESCRIPTION
1		WHT	GND	PWR	RADAR GND (BATTERY " " TERMINAL)
		BRN	N/C	N/C	DO NOT CONNECT
		RED	TRIG O/P	OUTPUT	"OPEN DRAIN OUTPUT 6". SEE NOTE 1,2.
		ORG	TRIG O/P	OUTPUT	"OPEN DRAIN OUTPUT 5". SEE NOTE 1,2.
		YEL	TRIG O/P	OUTPUT	"OPEN DRAIN OUTPUT 4". SEE NOTE 1, 2, 3.
		GRN	TRIG O/P	OUTPUT	"OPEN DRAIN OUTPUT 3". SEE NOTE 1,2.
	3	BLU	TRIG O/P	OUTPUT	"OPEN DRAIN OUTPUT 1". SEE NOTE 1.
		VIO	TRIG O/P	OUTPUT	"OPEN DRAIN OUTPUT 2". SEE NOTE 1.
		WHT	RS232 TX	OUTPUT	RS232 TRANSMIT SIGNAL FROM RADAR
		SLT	RS232 RX	INPUT	RS232 RECEIVE SIGNAL INTO RADAR
4		PNK	VCC	PWR	+5.5 TO +18VDC POWER SUPPLY
		BLK	GND	PWR	RADAR GND (BATTERY " " TERMINAL)

