



Installation Instructions (029-04839-0000) Rev H

March 2024

## 60W AC Power Kit

**REVISION BLOCK**

<b>REV.</b>	<b>DESCRIPTION</b>	<b>DATE</b>	<b>APPROVED</b>
A	Original Release	4/24/2017	JH
B	Bracket/Install Kit	1/23/2019	AP
C	Knockout Plug/Install Kit Instructions	7/08.2019	AG
D	Updated for new power supply	8/11/2020	AP
E	Updated for new conduit system	8/12/2020	AP
F	Updated to support enclosed assembly	1/19/2021	AP
G	Updated to support Nema assembly	8/10/2021	AP
H	Updated to support new power supply	3/26/2024	JC

**Note:** These instructions are in addendum to the instructions found in the LED Driver Feed Back and Wrong Way Alert Controller Installation Instructions. Please refer to those instructions for display installation and appropriate cautions and warnings.



Figure 1 - Parts included for connecting the power supply.

**NOTICE:** Because of TrafficCalm’s commitment to continuous improvement the content of these documents and product specifications may change without notice. Please contact your partner or TrafficCalm Technical service to check for updates before planning your installation.

**I. 60W AC Power Kit Contents in Box (see pic above)**

The power supply system consists of a

Qty 1 12 VDC 60W power supply

Qty 5 Double Wago Connections already installed. 3 for AC power in and 2 for DC power out to sign.

Qty 1 installation plate

Qty 4 bolt sets for installation plate

} The plate and 4 bolts may be pre installed at the factory.

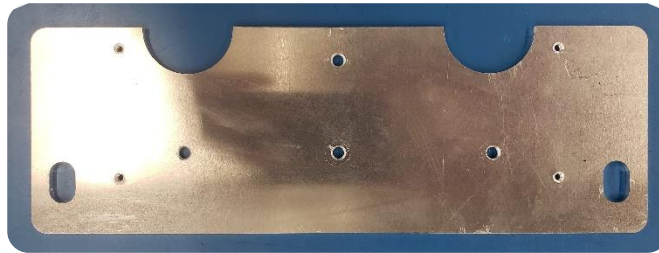
Qty1 round-post installation kit

Qty 5 ft of 3/8” conduit with wire installed.

Qty 2 liquid tight conduit adapters (90° routing)

## II. INSTALLING THE AC POWER TO THE MOUNTING PLATE

For easier installation, a mounting plate is included with required hardware to mount the power supply to the plate. Ensure the power supply is mounted with the DC side (output) mounted over the engraved arrow (see image below). Note that the power supply can be mounted on its edge or on the flat to accommodate several installation scenarios, decide which mounting orientation is best for your system by mock fitting the components before installing.



*Figure 2 - Mounting Plate Detail*

## III. WIRE CONNECTIONS

The AC line voltage connection and strain relief into the AC power supply will be provided by the customer.

**AC Line:** It is advised to use a liquid tight conduit adapter and conduit when attaching the power supply to AC power (not included). The AC input can be connected to 100-277 VAC at 50/60 Hz. On the power supply, the green wire is ground, the white wire is neutral and the black wire is line (hot). Once the AC connection is made, install the included wire box lid using the included screws.

**DC out:** On the power supply, the Red wire is Positive and the Black wire is Negative. Use the knockout that best suits the situation on the JBox. Next, using the supplied conduit with wire installed, connect the liquid tight conduit adapter and tighten the nut on the inside of the Jbox. Once the DC connection is made, install the included wire box lid using the included screws.

## 60W AC Power Kit Installation Instructions (029-04839-0000)

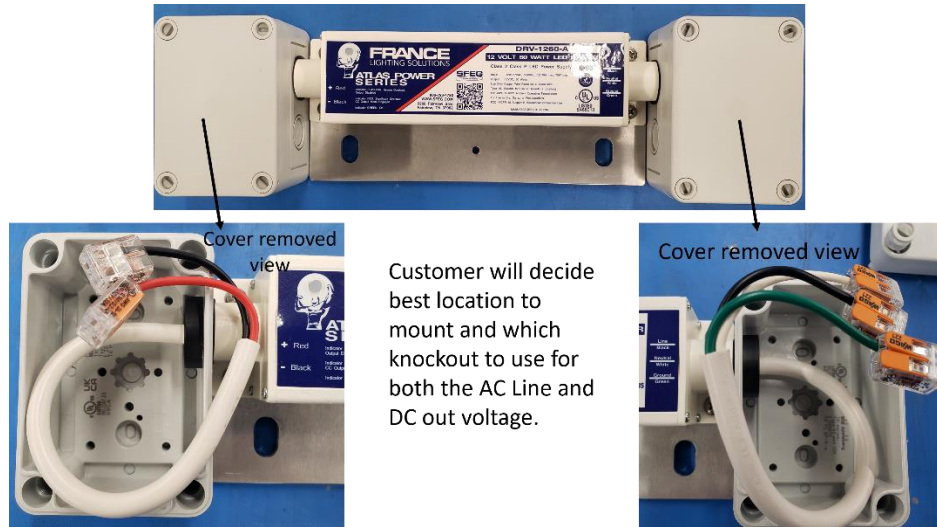


Figure 3 – AC/DC Power Supply Wiring

Customer will determine final length of conduit and properly route conduit and wires as per local regulations.

### IV. INSTALLING THE AC POWER SUPPLY TO A DFB SIGN

To install the 12 VDC output, remove the conduit adapter nut and slide it over the wire and the conduit. Pull the wires through the conduit adapter and into the power supply wire box end. Push the conduit into the conduit adapter and tighten down the adapter nut to secure the conduit.

Using the enclosed connectors, connect the solid black wire from the conduit to the black wire from the power supply. Connect the red wire from the power supply to the black wire labeled with “positive” from the conduit using a connector. Coil the excess wire into the wire box end on the power supply and place the lid on the wire box and secure it with the included screws.

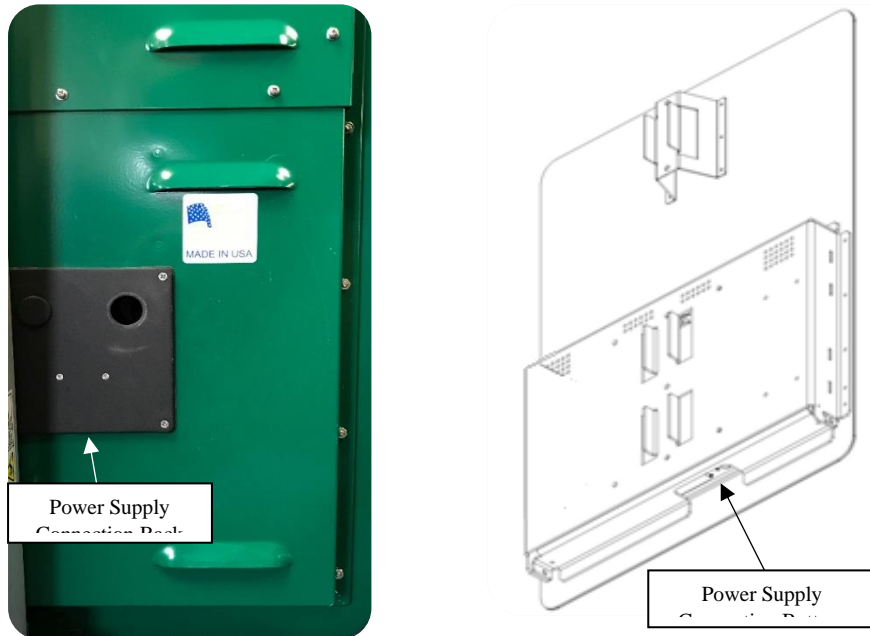


Figure 4 – Power supply connection plate on DBF sign (location may be different depending on sign).

Run the conduit to the back of the Driver Feedback (DFB) sign (for the 15” sign, the power connection is on the bottom of the sign). Remove the screws holding the plate on the sign (see Figure 2). Remove the retaining nut from the conduit adapter attached to the conduit. Insert the power connector and the end of the conduit adapter into the conduit opening on the sign back plate. Slip the retaining nut over the wire and tighten the nut onto the conduit adapter to secure the adapter to the sign. Connect the wire to the power input connector on the sign. Reinstall the back plate on the sign.

## V. INSTALLING THE AC POWER SUPPLY TO A WRONG WAY ALERT CONTROLLER

The procedure for mounting the AC supply to a Wrong Way Alert is very similar to the above instructions. Provisions are supplied for routing the supplied conduit and cabling through the bottom of the box and terminating into the corresponding connector in the device.

## VI. APPLYING POWER

**MAKE SURE THE AC POWER IS SHUT OFF BEFORE CONNECTING THE AC INPUT TO THE POWER SUPPLY. THE AC CONNECTION SHOULD BE MADE BY A QUALIFIED TECHNICIAN.**



TraffiCalm Systems provides the following warranty for its traffic calming solutions whether sold directly by TraffiCalm or by an authorized TraffiCalm distribution partner.

## Warranty

- TrafficCalm Systems warrants the product, excluding batteries, will be free of defect in materials and workmanship for a period of three (3) years beginning on the day the end user receives the product. Warranty is only valid if the product is ineffective for its intended purpose due to defects in materials or workmanship.
- Warranty is only valid if the product is installed, operated and maintained in accordance with the manufacturer's instructions and recommendations (available upon request).
- TrafficCalm's sole responsibility, and the purchaser's and users' exclusive remedy, shall be that TrafficCalm will furnish replacements for defective parts.
- Replacement parts will carry the unexpired warranty of the parts they replace. Non warranty repairs are guaranteed for a period of 90 days.
- Claims made under this warranty will be honored only if TrafficCalm is notified of a failure within the warranty period, reasonable information requested by TrafficCalm is provided, and TrafficCalm is permitted to verify the cause of the failure.
- TrafficCalm assumes no liability for any incidental or consequential damages, in any way related to the product regardless of the legal theory on which the claim is based.

### **This warranty does not cover damage resulting from:**

- Accidents, vandalism, impact with a foreign object, or acts of God.
- Product modifications made by someone not authorized by TrafficCalm
- Failure of Customer to follow TrafficCalm's published operating instructions,
- Failure to follow TrafficCalm's published site selection and installation instructions,
- Removal or relocation of the unit,
- Electrical work external to the unit, virus/hacker activity, and external computer errors.

THIS WARRANTY IS MADE IN LIEU OF ALL OTHER WARRANTIES AND CONDITIONS, EXPRESS OR IMPLIED, INCLUDING BUT NOT LIMITED TO THE IMPLIED WARRANTIES AND CONDITIONS OF MERCHANTABILITY.