

DRIVER FEEDBACK SIGNS



Part #: M75-15DFB-000x

IQ1500ca Driver Feedback Sign

** iQ1500ca is Available for Canadian Orders Only.*

The IQ Series of Radar Driver Feedback Signs offers solutions for increasing driver speed awareness and road safety. The bright 15" characters can be seen from up to 750' away, and help increase driver speed awareness on the roadways where accidents can be so dangerous. SafetyCalm™ data collection software allows you to gather hard data of traffic patterns and program the sign to help keep roads safer.

TraffiCalm™ Driver Feedback Signs are manufactured in the USA in an ISO 9001:2015 certified facility, meeting and exceeding industry standards and state testing requirements. Optionally, the 15" TraffiCalm™ Signs can be supplied UL/ULC listed for electric code compliance. TraffiCalm™ signs are unmatched in durability, accuracy, ease of use and affordability.

Features of the iQ1500ca:

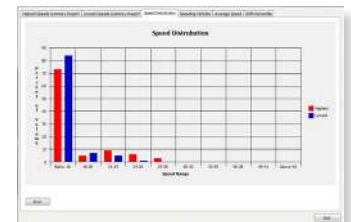
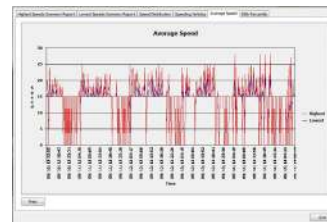
- Bluetooth wireless programming
- SafetyCalm Configuration and Traffic Data Collection software included free
- SafetyCalm Android App available on the Google Play Store for free
- Built in White Strobe LEDs and alternating red digits
- UL/ULC listed option available for simple and code compliant installation
- 100% MUTCD compliant
- Solar or 110V AC ready (power packages sold separately)
- K-band (24.15GHz) radar, range 450+ feet.
- Unlimited tech support and customer service from our USA facility for the life of the sign
- Fast delivery- typically ships within 5 days of order
- 3 year limited warranty

Package Includes:

Driver Feedback sign, mounting bracket, SafetyCalm™ Configuration and Traffic Data Collection Software, installation and user manual.

SafetyCalm

SafetyCalm Configuration and Traffic Data Collection Software allows you to program your sign from your laptop and collect and graphically display traffic data



Why TraffiCalm™?

- ISO 9001:2015 Certified USA based facility
- All signs 100% MUTCD compliant
- Vandal resistant designs
- Broadest range of sizes and options in the industry
- Industry leading turnaround from order to delivery
- Unlimited tech support and customer service from our USA facility
- Industry Pioneers in Enhanced Road Signage



| Feature | Specifications |
|---|---|
| LED and Radar Components | |
| Speed Display Height | 15" high numbers |
| Configuration | Seven-Segment Display |
| "YOUR SPEED" Legend | 6" high highway gothic font (MUTCD compliant) |
| LED, 1/2 Cone Angle | Amber (590nm); ½ Angle 15°; Rated 100,000 hours; 20,000 CDA/ M^2, Auto Dimming employed |
| Amber LED on Axis Intensity | 20,000 CDA/SQ meter |
| Sign Legibility | Viewable range: 1,000 feet; legible range: 750 feet |
| Speed Resolution and Range | Min 5 MPH; Max 99 MPH in 1 MPH steps. Range 600 feet. (Max 140 mph available as custom order) |
| Radar Specification and Range | K-band (24.15GHz) direct sensing; license free (FCC part 15 compliant); average range at 450 feet (plus 400' or minus 100' depending on vehicle size) |
| Materials and Construction | |
| Chassis Size/Total Weight | 30" width x 41" height x 3" depth; 36 pounds |
| Front Face Sheeting | 3M™ Diamond Grade™, high visibility prismatic, long life protective sheeting |
| Sign Face Color | White, fluorescent yellow-green; with additional colors optional |
| Sign Mounting Construction | 3/16" thick aluminum brackets and 1/8" face; standard 3% tilt bracket configuration; Flat mount brackets optional |
| Vandal Resistant Construction | Sealed electronics box (ECS) 1/16" thick aluminum enclosure attached to a 1/8" thick mounting plate. The ECS is removable from the chassis as a complete unit. |
| | 1/4" high impact polycarbonate face with high contrast mask; anti-glare graffiti and sunlight resistant |
| | Provisions for padlocking in place are provided |
| | Standard DOT powder coat green color with additional colors optional |
| Electronics Enclosure Rating | Weatherproof; NEMA 3R |
| Electrical Specifications | |
| Power Requirements | 12VDC (10.5VDC to 16VDC), 54W (30x41) or 115W (48x60), Stealth 2W: Standby 0.5W/Shutdown 100mW; Ave 10W (30x41) or 30W (48x60) |
| Voltage Requirements | 9V-30VDC; 12VDC Nominal (Battery protection at 11.5VDC and 10.8VDC; startup at 12.3VDC) |
| Power Options | 110VAC Power Supply |
| | Solar kits: 60W, 90W, and 140W kits available |
| | Battery charger kits and battery boxes |
| Operating Temperature | Internal components: -34°C to +74°C/-29°F to +165°F |
| | Ambient environment: -34°C to +60°C/-29°F to 140°F |
| Warranties | 3 year limited warranty on sign and options (excluding batteries) |
| SafetyCalm™ Configuration and Traffic Data Collection Software | |
| Data Collection | SafetyCalm software, license free |
| Event Logging with Time Stamp | Event data: 60 days with a circular buffer; applied voltage (VDC); internal temperature (°C); ambient light (lux); display functional status; traffic status; shock sensor events; parameter events |
| Vehicle Data Logging Capacity | Speed Data: 90 days with circular buffer (oldest reading replaced by newest) based on 24/7 operation |
| Programmable Display Features | Min. speed limit, speed limit, over speed, and maximum speed to display |
| | Display type: blank (stealth mode); actual speed; speed limit; flashing digits; steady digits; external beacon control |
| Schedules | Repeating daily: 9 events; repeating weekly: 9 events; non-repeating dated: 9 events; (27 events in each 24 hour period; 365 days per year while powered) |
| Communications | Bluetooth Class 1 connectivity (V2.1 +EDC) min at 30' (FCC certified); RS232 port (OPTIONAL - Must Be Factory Installed) |
| | App for Android available for free on Google Play Store |
| System Requirements | Operating system: Windows XP, Windows Vista, Windows 7; Windows 10 |
| | Screen resolution: 1024 x 768 or better |
| | Communications interfaces: Bluetooth Class 1 or 2 adapters (capabilities: V1.0, V1.2, V2.0, V2.1 + EDC) |
| | Disk space: 16.5MB minimum |

released: 20210113

