

# DRIVER FEEDBACK SIGNS



Part #: M75-15DFB-000x

## IQ1500ca Driver Feedback Sign

*\* iQ1500ca is Available for Canadian Orders Only.*

The IQ Series of Radar Driver Feedback Signs offers solutions for increasing driver speed awareness and road safety. The bright 15" characters can be seen from up to 750' away, and help increase driver speed awareness on the roadways where accidents can be so dangerous. SafetyCalm™ data collection software allows you to gather hard data of traffic patterns and program the sign to help keep roads safer.

TraffiCalm™ Driver Feedback Signs are manufactured in the USA in an ISO 9001:2015 certified facility, meeting and exceeding industry standards and state testing requirements. Optionally, the 15" TraffiCalm™ Signs can be supplied UL/ULC listed for electric code compliance. TraffiCalm™ signs are unmatched in durability, accuracy, ease of use and affordability.

### Features of the iQ1500ca:

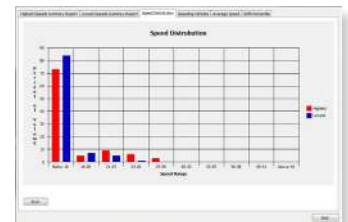
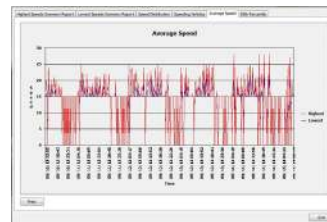
- Bluetooth wireless programming
- SafetyCalm Configuration and Traffic Data Collection software included free
- SafetyCalm Android App available on the Google Play Store for free
- Built in White Strobe LEDs and alternating red digits
- UL/ULC listed option available for simple and code compliant installation
- 100% MUTCD compliant
- Solar or 110V AC ready (power packages sold separately)
- K-band (24.15GHz) radar, range 450+ feet.
- Unlimited tech support and customer service from our USA facility for the life of the sign
- 3 year limited warranty

### Package Includes:

Driver Feedback sign, mounting bracket, SafetyCalm™ Configuration and Traffic Data Collection Software, installation and user manual.

### SafetyCalm

SafetyCalm Configuration and Traffic Data Collection Software allows you to program your sign from your laptop and collect and graphically display traffic data



### Why TraffiCalm™?

- ISO 9001:2015 Certified USA based facility
- All signs 100% MUTCD compliant
- Vandal resistant designs
- Broadest range of sizes and options in the industry
- Industry leading turnaround from order to delivery
- Unlimited tech support and customer service from our USA facility
- Industry Pioneers in Enhanced Road Signage



Feature	Specifications
<b>LED and Radar Components</b>	
Speed Display Height	15" high numbers
Configuration	Seven-Segment Display
"YOUR SPEED" Legend	6" high highway gothic font (MUTCD compliant)
LED, 1/2 Cone Angle	Amber (590nm); ½ Angle 15°; Rated 100,000 hours; 20,000 CDA/ M^2, Auto Dimming employed
Amber LED on Axis Intensity	20,000 CDA/SQ meter
Sign Legibility	Viewable range: 1,000 feet; legible range: 750 feet
Speed Resolution and Range	Min 5 MPH; Max 99 MPH in 1 MPH steps. Range 600 feet. (Max 140 mph available as custom order)
Radar Specification and Range	K-band (24.15GHz) direct sensing; license free (FCC part 15 compliant); average range at 450 feet (plus 400' or minus 100' depending on vehicle size)
<b>Materials and Construction</b>	
Chassis Size/Total Weight	30" width x 41" height x 3" depth; 36 pounds
Front Face Sheeting	3M™ Diamond Grade™, high visibility prismatic, long life protective sheeting
Sign Face Color	White, fluorescent yellow-green; with additional colors optional
Sign Mounting Construction	3/16" thick aluminum brackets and 1/8" face; standard 3% tilt bracket configuration; Flat mount brackets optional
Vandal Resistant Construction	Sealed electronics box (ECS) 1/16" thick aluminum enclosure attached to a 1/8" thick mounting plate. The ECS is removable from the chassis as a complete unit.
	1/4" high impact polycarbonate face with high contrast mask; anti-glare graffiti and sunlight resistant
	Provisions for padlocking in place are provided
	Standard DOT powder coat green color with additional colors optional
Electronics Enclosure Rating	Weatherproof; NEMA 3R
<b>Electrical Specifications</b>	
Power Requirements	12VDC (10.5VDC to 16VDC), 54W (30x41) or 115W (48x60), Stealth 2W: Standby 0.5W/Shutdown 100mW; Ave 10W (30x41) or 30W (48x60)
Voltage Requirements	9V-30VDC; 12VDC Nominal (Battery protection at 11.5VDC and 10.8VDC; startup at 12.3VDC)
Power Options	110VAC Power Supply
	Solar kits: 60W, 90W, and 140W kits available
	Battery charger kits and battery boxes
Operating Temperature	Internal components: -34°C to +74°C/-29°F to +165°F
	Ambient environment: -34°C to +60°C/-29°F to 140°F
Warranties	3 year limited warranty on sign and options (excluding batteries)
<b>SafetyCalm™ Configuration and Traffic Data Collection Software</b>	
Data Collection	SafetyCalm software, license free
Event Logging with Time Stamp	Event data: 60 days with a circular buffer; applied voltage (VDC); internal temperature (°C); ambient light (lux); display functional status; traffic status; shock sensor events; parameter events
Vehicle Data Logging Capacity	Speed Data: 90 days with circular buffer (oldest reading replaced by newest) based on 24/7 operation
Programmable Display Features	Min. speed limit, speed limit, over speed, and maximum speed to display
	Display type: blank (stealth mode); actual speed; speed limit; flashing digits; steady digits; external beacon control
Schedules	Repeating daily: 9 events; repeating weekly: 9 events; non-repeating dated: 9 events; (27 events in each 24 hour period; 365 days per year while powered)
Communications	Bluetooth Class 1 connectivity (V2.1 +EDC) min at 30' (FCC certified); RS232 port (OPTIONAL - Must Be Factory Installed)
	App for Android available for free on Google Play Store
System Requirements	Operating system: Windows XP, Windows Vista, Windows 7; Windows 10
	Screen resolution: 1024 x 768 or better
	Communications interfaces: Bluetooth Class 1 or 2 adapters (capabilities: V1.0, V1.2, V2.0, V2.1 + EDC)
	Disk space: 16.5MB minimum

released: 20210113

