

Pedestal Pole Kits

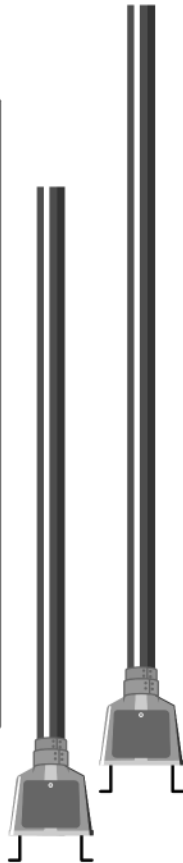
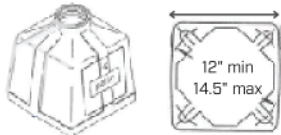
SPUN ALUMINUM POLES

16' Aluminum Pole Kit PN: M85-R1640-AT00

- **16' Spun Aluminum Pole**
PN: 029-05050-0000
- **Pedestal Base/Door**
PN: 029-05053-0000
- **Anchor Kit**
PN: 029-05056-0000

14' Aluminum Pole Kit PN: M85-R1440-AT00

- **14' Spun Aluminum Pole**
PN: 029-05049-0000
- **Pedestal Base/Door**
PN: 029-05053-0000
- **Anchor Kit**
PN: 029-05056-0000



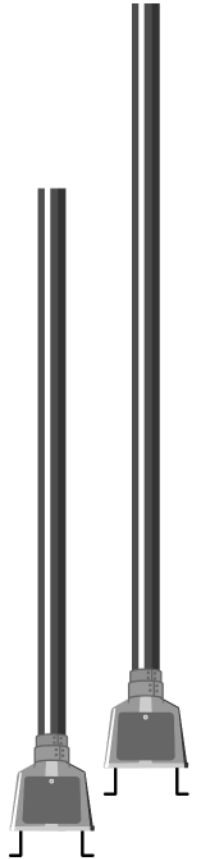
GALVANIZED STEEL POLE KITS

16' Galvanized Steel Pole Kit PN: M85-R1640-GT00

- **16' Galvanized Steel Pole**
PN: 029-05052-0000
- **Pedestal Base/Door**
PN: 029-05053-0000
- **Anchor Kit**
PN: 029-05056-0000

14' Galvanized Steel Pole Kit PN: M85-R1440-GT00

- **14' Galvanized Steel Pole**
PN: 029-05051-0000
- **Pedestal Base/Door**
PN: 029-05053-0000
- **Anchor Kit**
PN: 029-05056-0000



SOLD SEPARATELY

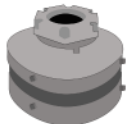
POLE CAP (4.5")
PN: 029-05055-0000

BASE COLLAR
PN: 029-05054-0000

PEDESTAL BASE/DOOR
PN: 029-05053-0000

ANCHOR KIT
PN: 029-05056-0000

The M85-SATOP-0000 Kit is highly advised, and purchased separately, when the CTL2/CLB2/BSC2 or CTL3/CLB3/BSC3 devices are used. Don't forget it!



NOTES:

All poles are 4.5" round (outside diameter) and factory threaded.

Parts and pieces can be ordered individually via the part numbers below each item above.